



Camden Climate Panel - Session 3

Tuesday 21st November 2023

HOUSEKEEPING



AGENDA

- Introduction and welcome
- Reconnection
- Owner-Occupier Retrofit Scheme - presentation and small group discussions
- Break
- Community Session - your ideas
- Wrap up and close - 8:30pm



Conversation Guidelines

Guidelines suggested by Panel

Members

- Less is more, be comfortable with silence
- Ensure everyone has space to speak
- Feeding back to the wider group is a shared responsibility
- There are lots of different ways to contribute to a discussion, only do what you feel comfortable doing
- What gets said in the room, stays in the room, unless we agree otherwise
- If you committed, attend the sessions and be present
- Timekeeping!

Guidelines suggested by Involve

- Just one conversation at a time
- Only share what you feel comfortable sharing
- No such thing as a silly question
- Be mindful that we all communicate and take in information at different paces
- Background conversations to the foreground
- Step forward, step back
- Be respectful of others and their opinions
- Disagree, but please don't be disagreeable

Reconnection Exercise

What stood out to you from the Climate Resilience Plan?



involve



Private Sector Retrofit Scheme

Camden's Retrofit Scheme – Context & Overview

November 2023



Context

- In 2022, household emissions accounted for **almost 20%** of all emissions in the UK.
 - In Camden, **over a quarter of all carbon emissions** come from our homes.
- Emissions from the home are largely from the use of fossil fuels for activities such as heating and cooking.
- Having an energy efficient home not only reduces emissions, but it also makes homes warmer and lowers energy bills.
- Ensuring Camden's buildings are energy efficient, comfortable and fit for purpose is one of the four major themes of Camden's Climate Action Plan.

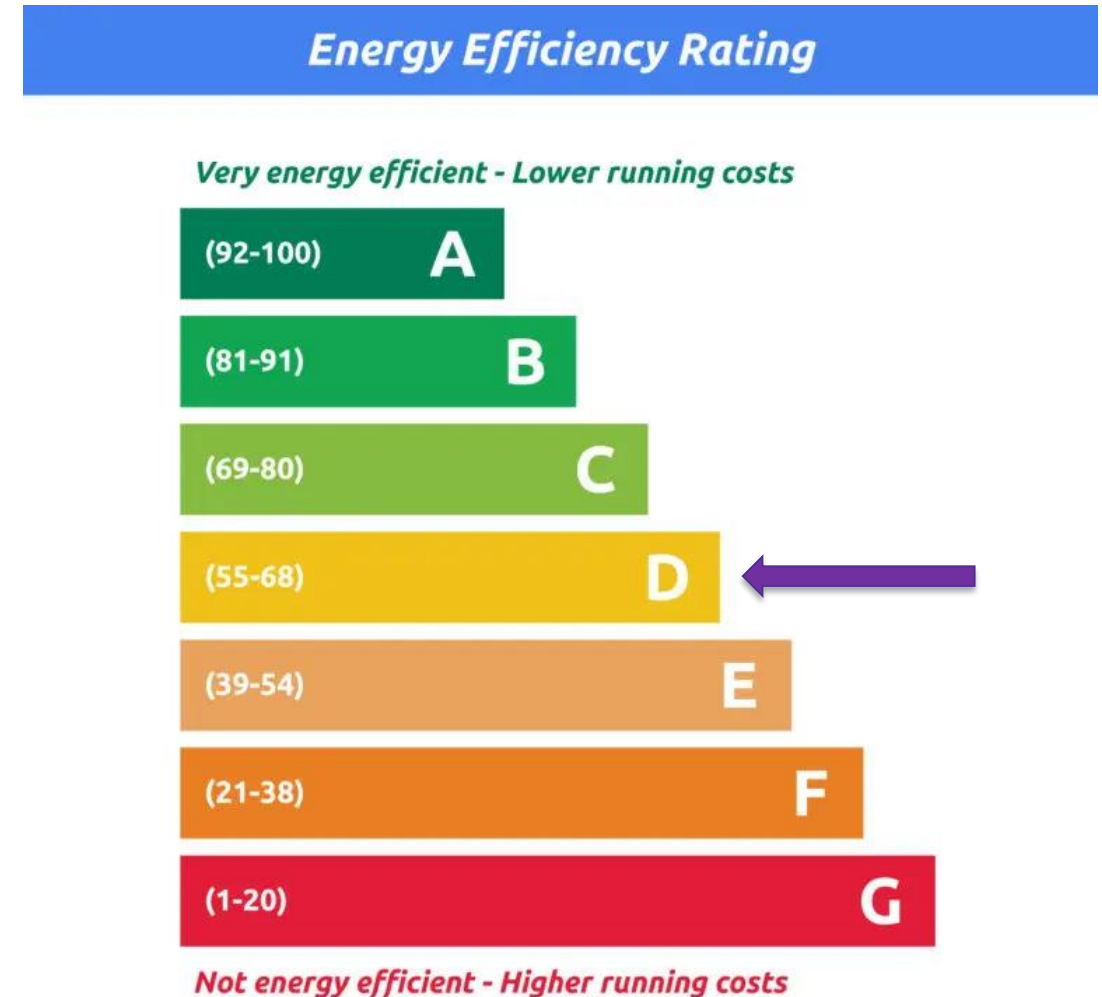


Buildings - Camden's buildings will be energy efficient, comfortable and fit-for-purpose for a zero carbon future.



Context

- In the UK, Standard Assessment Procedure (SAP) ratings/Energy Performance Certificates are used to help determine how energy efficient a property is
 - an A rating being very efficient home through to G being a very inefficient home.
- Many UK homes are inefficient due to the age of the housing stock.
- The average Energy Performance score for homes in Camden is a D.



What is home retrofit?

- In order to improve home energy efficiency, home retrofit is required.
- Retrofitting is the process of making improvements to your home, so it becomes more energy efficient and produces less emissions.
- Common retrofit upgrades include:
 - Installing or upgrading insulation of walls, floors & lofts
 - Upgrading windows and doors
 - Or installing renewable energy systems such as solar thermal heating systems or Solar Photovoltaic (Solar PV) to provide low carbon electricity.



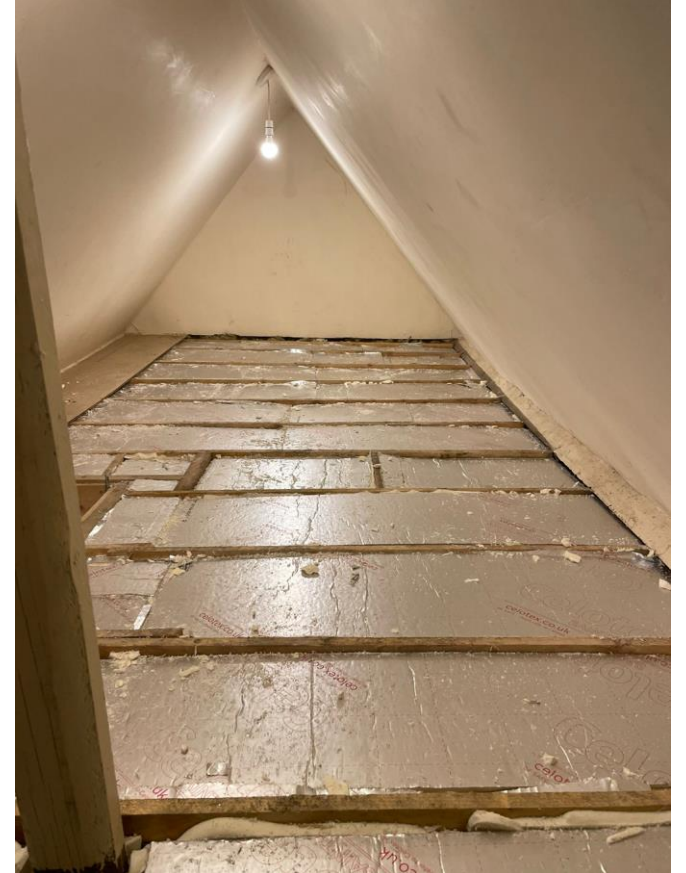
Camden's retrofit programme for council housing

- In 2020, the council launched a programme of work to retrofit Camden owned properties over the coming years.
- Two major retrofit projects are underway at 5-7 Belsize Grove and Brookes Court Estate - the retrofit of a further 27 street properties is also planned for this financial year (2023-2024)
- In March 2023, we also secured a further £3.1M to retrofit more of our least efficient properties. Camden continues to look for different ways to fund retrofit works.
- More info on this work can be found on our website: [Council homes for people and the planet - Camden Council](#)

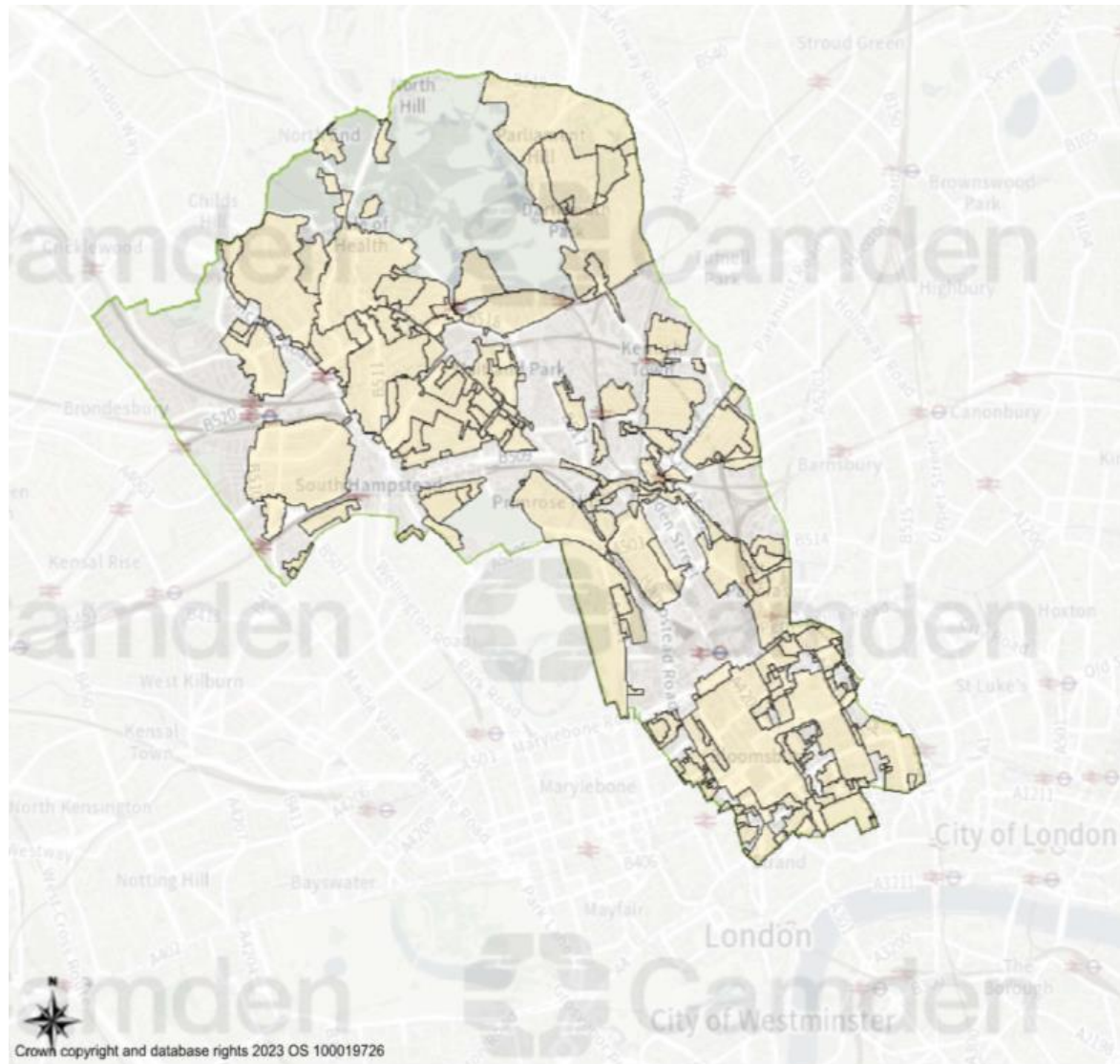


Home retrofit in Camden

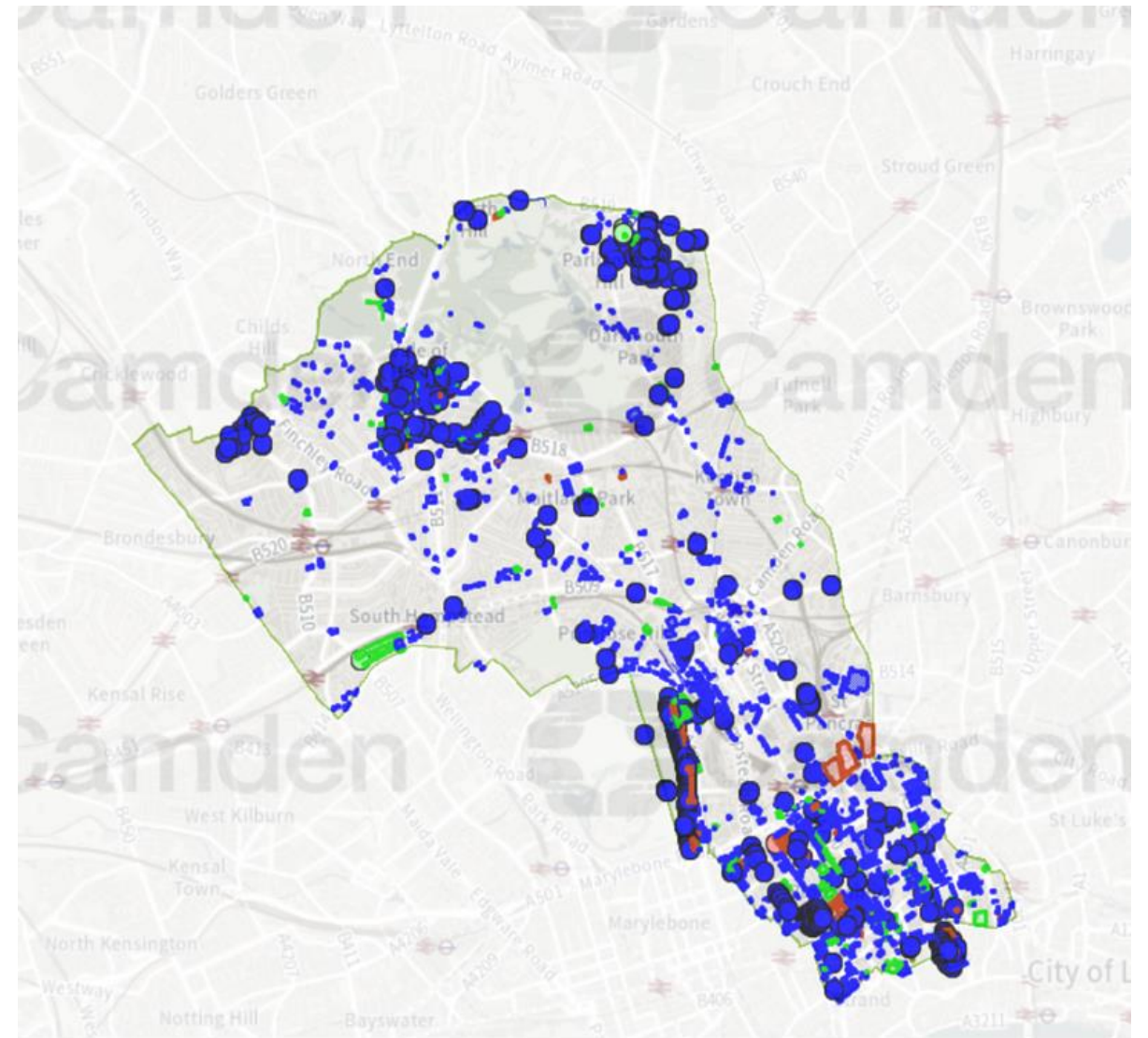
- Around a third of Camden's homes are privately owned. Anecdotal evidence suggests that there are low levels of retrofit occurring among homeowners.
- Feedback from residents suggests this is due to several reasons including:
 - A lack of understanding of what can be done to their homes and what the benefits are
 - Financial barriers
 - Confusion around planning processes e.g what is permitted vs. what requires planning permission
- Many Camden residents live conservation areas or listed buildings – these are areas and buildings with special architectural or historic interest.
- Residents who live in these buildings or areas can face additional restrictions with what they can do to their homes, and will likely need to consider other factors if they are wanting to retrofit their homes.



Map 1: Conservation areas in Camden



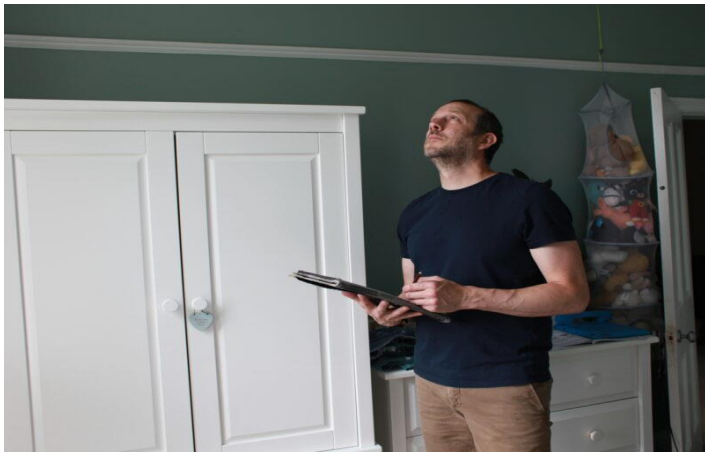
Map 2: Listed Buildings in Camden




Camden retrofit support scheme overview

In order to increase the level of home retrofit occurring in Camden, the council is proposing to pilot a retrofit support scheme for homeowners. The scheme will include three key offerings:

- 1. Offering 20 subsidised Whole House Retrofit Plans.** These will:
 - Lay out the best energy efficiency measures for your home
 - Show how much money and carbon savings could be made
 - Provide insight into how much the works would cost
- 2. Grant funding of up to £5,000 through the Camden Climate Fund**
Whole house retrofit plans are a required as part of any Camden Climate Fund application – Recipients of the subsidised plans will fast-track access to grant funding
- 3. Rolling out retrofit-themed community events in Camden**
These will focus on reducing further barriers to retrofit including understanding planning processes and how to find a good contractor/installer (open to all residents)



Retrofit Customer Journey

- 
1. Residents are considering retrofit to improve home energy efficiency
 2. Residents are exploring options and require advice on what to do
 3. Resident deliberates whether to go ahead with installing measures in their homes
 4. Resident arranges retrofit installation
 5. Installation occurs
 6. Resident uses energy in retrofitted home

Camden Private Sector Retrofit Scheme

Camden provides subsidised **Whole House Retrofit Assessments** to advise residents on suitable measures for their homes

Camden's Community retrofit series **enables residents to learn more about retrofit and ask questions**

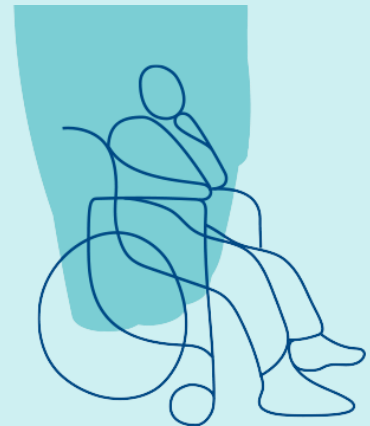
A retrofit grant available through the Camden Climate Fund helps reduce the cost of installations



Questions at your tables

At your tables

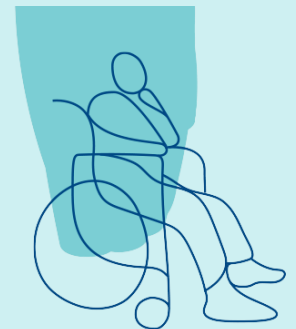
At each stage, where do you think the barriers are to progress with retrofit?



At your tables

What support do you think homeowners might need at each of these stages to overcome the barriers identified?

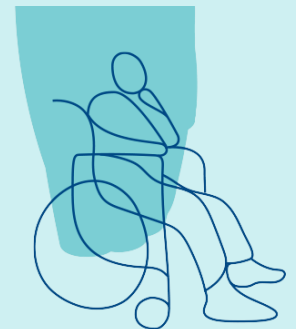
Who could help provide this support for homeowners?



At your tables

How should the retrofit scheme be promoted?

- *How can Camden best reach homeowners and landlords to talk about retrofit?*
- *What role could communities play and what support would they need from Camden?*
- *What would be a good name for the scheme?*





Break

involve

Community Session Meeting - March 2024

What?

Celebration of the Panel's work to date and wider community action on climate in Camden

When?

Saturday 2nd March 2024

Who?

Panel Members, Camden Council, business owners, climate groups, and the wider community



Community Session Meeting - March 2024

What we would like to cover:

- Journey of the Panel
- Camden Council Climate Action
- Community-led Climate Action
- Questions for attendees:
 - *How would you like to see the Climate Action Plan implemented?*
 - *What else would you like to see happen in Camden?*



At your tables

What would encourage your friends, family and community to attend the event?

What other community activities are happening in Camden that you are aware of? How could we get these groups involved in the Community Session?

How would you like to share what we've been doing as the Panel and would you like to be involved in delivering this?

What would you like the Community Session to focus on? One topic or keep it more open?



Journey So far

- Climate Resilience Plan
- Owner-Occupier Retrofit
- Community Session

What's next?

- Microsite
- Third annual review of climate action plan out now
- Community Session Saturday 2nd March 2024
- Please complete the **feedback form!**

Scan here for the
Feedback Form!



How to stay in touch

Email us: climatepanel@involve.org.uk

Call us and ask for Frances: 020 3745 4334

Visit the Microsite:

<https://sites.google.com/involve.org.uk/camdenclimatepanel/home>

Keep in touch with each other





THANK YOU