

# CAMDEN AND ISLINGTON ESOL ADVICE SERVICE ESOL ACTIVITIES

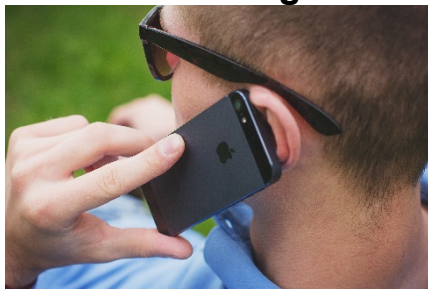
Tuesday 1 September 2020

## Phone calls and emails

### Pre-entry to Entry 1

#### Voicemail message

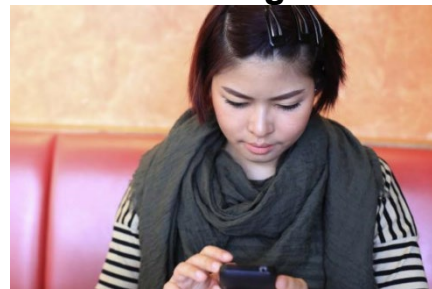
Listening



For Pre-Entry to Entry 1 Learners

#### Writing text messages

Writing



For Pre-Entry to Entry 1 Learners

### Entry 1 to Entry 2

#### Understanding texts

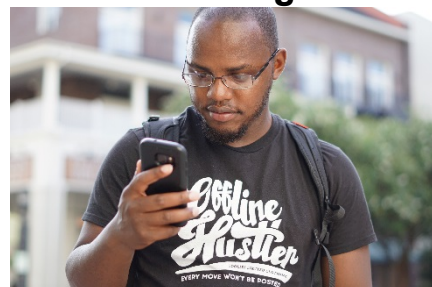
Reading



For Entry 1 to Entry 2 Learners

#### Cancelling plans

Reading



For Entry 1 to Entry 2 Learners

CAMDEN  
020 7974 1618  
[esol@camden.gov.uk](mailto:esol@camden.gov.uk)  
[www.camden.gov.uk/esol](http://www.camden.gov.uk/esol)



ISLINGTON  
020 7974 1930  
[esol@islington.gov.uk](mailto:esol@islington.gov.uk)  
[www.islington.gov.uk/esol](http://www.islington.gov.uk/esol)



Supported by  
 ISLINGTON

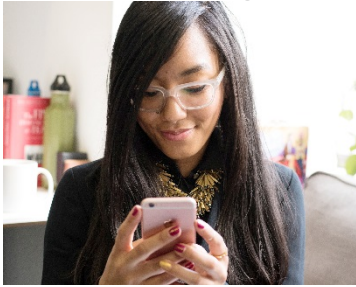
# CAMDEN AND ISLINGTON ESOL ADVICE SERVICE ESOL ACTIVITIES

Tuesday 1 September 2020

## Entry 2 to Entry 3

### Invitation to a party

Listening



For Entry 2 to Entry 3 Learners

### Leaving a message

Speaking

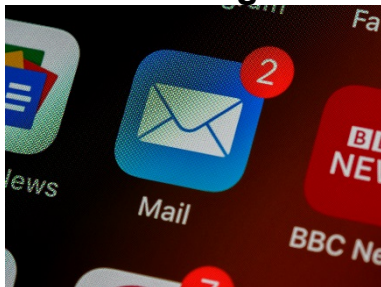


For Entry 2 to Entry 3 Learners

## Entry 3 to Level 1

### Planning an email

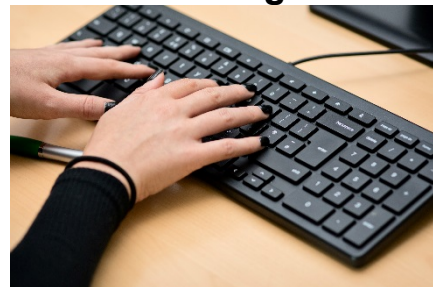
Writing



For Entry 3 to Level 1 Learners

### Email etiquette

Writing



For Entry 3 to Level 1 Learners

CAMDEN  
020 7974 1618  
[esol@camden.gov.uk](mailto:esol@camden.gov.uk)  
[www.camden.gov.uk/esol](http://www.camden.gov.uk/esol)



ISLINGTON  
020 7974 1930  
[esol@islington.gov.uk](mailto:esol@islington.gov.uk)  
[www.islington.gov.uk/esol](http://www.islington.gov.uk/esol)



Supported by  
 ISLINGTON

# CAMDEN AND ISLINGTON ESOL ADVICE SERVICE ESOL ACTIVITIES

Tuesday 1 September 2020

## Level 1 to Level 2

### Telephone pros and cons

Listening



For Level 1 to Level 2 Learners

### Digital habits

Reading



For Level 1 to Level 2 Learners

## Useful links

Click on the links below:

**NHS Coronavirus Test and Trace:** Call 119 to get a Coronavirus test.  
**Coronavirus information in your language**

**Mental Health Helpline – Open 24 hours a day**

**First Aid – British Red Cross / NHS**

**Housing Advice – [Click here for Camden](#) / [Click here for Islington](#)**

**Learn My Way – Free digital skills courses**

**GCF Learn Free – ICT and other subjects**

**Policy in Practice – Understanding the benefits system**

**Supporting your child's learning – Information in 17 languages**

**General and Business English**

**Business language to go**

**English at work – Listening series**

**BBC - Learning English**

**British Council – Learn English**

**Many Things in English**

**ESOL Courses Online – Beginner English**

CAMDEN  
020 7974 1618  
[esol@camden.gov.uk](mailto:esol@camden.gov.uk)  
[www.camden.gov.uk/esol](http://www.camden.gov.uk/esol)



ISLINGTON  
020 7974 1930  
[esol@islington.gov.uk](mailto:esol@islington.gov.uk)  
[www.islington.gov.uk/esol](http://www.islington.gov.uk/esol)