

CAMDEN AND ISLINGTON ESOL ADVICE SERVICE ESOL ACTIVITIES

Monday 27 July 2020

English at Work

Pre-entry to Entry 1

Job Adverts

Reading



For Pre-Entry to Entry 1 Learners

Job Interview

Listening



For Pre-Entry to Entry 1 Learners

Entry 1 to Entry 2

My first day at work

Listening and Vocabulary



For Entry 1 to Entry 2 Learners

A job in a supermarket

Reading



For Entry 1 to Entry 2 Learners

CAMDEN
020 7974 1618
esol@camden.gov.uk
www.camden.gov.uk/esol



ISLINGTON
020 7974 1930
esol@islington.gov.uk
www.islington.gov.uk/esol



Supported by
 ISLINGTON

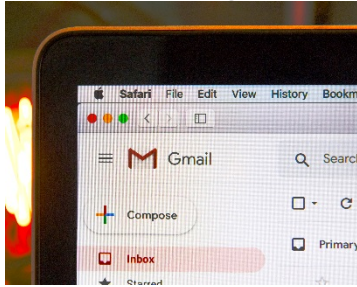
CAMDEN AND ISLINGTON ESOL ADVICE SERVICE ESOL ACTIVITIES

Monday 27 July 2020

Entry 2 to Entry 3

Email addresses

Writing



For Entry 2 to Entry 3 Learners

A job in a charity shop

Listening

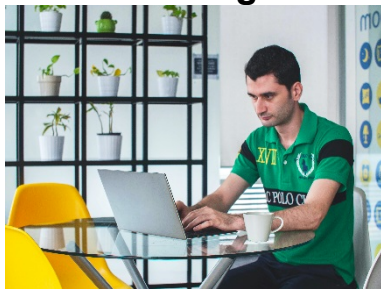


For Entry 2 to Entry 3 Learners

Entry 3 to Level 1

Writing emails

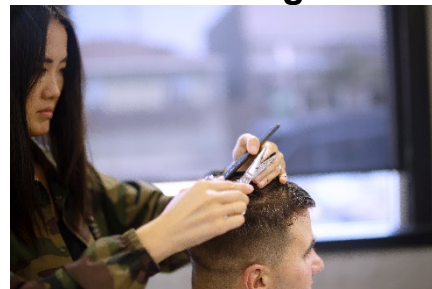
Writing



For Entry 3 to Level 1 Learners

Self-employment

Listening



For Entry 3 to Level 1 Learners

CAMDEN
020 7974 1618
esol@camden.gov.uk
www.camden.gov.uk/esol



ISLINGTON
020 7974 1930
esol@islington.gov.uk
www.islington.gov.uk/esol



Supported by


CAMDEN AND ISLINGTON ESOL ADVICE SERVICE

ESOL ACTIVITIES

Monday 27 July 2020

Level 1 to Level 2

On the phone at work

Speaking



For Level 1 to Level 2 Learners

Your rights at work

Listening



For Level 1 to Level 2 Learners

Useful links

Click on the links below:

General and Business English

Business language to go

English at work – Listening series

BBC - Learning English

British Council – Learn English

Many Things in English

ESOL Courses Online – Beginner English

Learn My Way – Free digital skills courses

GCF Learn Free – ICT and other subjects

Housing Advice – [Click here for Camden](#) / [Click here for Islington](#)

Policy in Practice – Understanding the benefits system

Supporting your child's learning – Information in 17 languages

Coronavirus information in your language

First Aid – [British Red Cross](#) / [NHS](#)

Mental Health Helpline – Open 24 hours a day

CAMDEN
020 7974 1618
esol@camden.gov.uk
www.camden.gov.uk/esol



ISLINGTON
020 7974 1930
esol@islington.gov.uk
www.islington.gov.uk/esol