

Date: 17 September 2020
Our reference: CP1/2020/St Paul's Crescent
Email: safetravel@camden.gov.uk



Transport Strategy Service
London Borough of Camden
5 Pancras Square
London
N1C 4AG

Phone: 020 7974 4444
camden.gov.uk

New cycle cut-through on St Paul's Crescent

Dear Sir or Madam,

We are writing to inform you of minor changes the Council is making to the pavement on the section of St Paul's Crescent north of Agar Grove, to provide a new cut-through for cyclists.

Currently, there is a wide, tree covered area of public space on the lower part of this section of St Paul's Crescent which is closed to traffic. A cycle cut-through will be provided through the public space, to link to Agar Grove, which will give a continuous route through Canteloves and enable cyclists to connect to Agar Grove. There is an existing red brick surface at this location which functions as a cycle track.

This plan is part of the Council's Covid-19 Safer Travel measures, to provide high quality sustainable travel options. The Covid-19 pandemic has created new road safety challenges in Camden that the Council is taking seriously. We want to make it easier and safer for people to walk and cycle locally, shop on their local high street, reach their local green spaces, schools and NHS sites, all while maintaining physical distancing. We are also looking to tackle future challenges caused by changes in the way that people travel now that lockdown restrictions have eased. This includes a predicted rise in walking, cycling and car use with people less likely to choose public transport. Further details on our plans can be found here: www.camden.gov.uk/making-travel-safer-in-camden

As part of this response, the Council has developed a programme of cycle permeability improvements, to make more Camden streets accessible to cyclists by providing better connections and links. This includes, creating cut-throughs on dead end streets and two-way cycling on one way streets, where it is safe to do so. Further details of our approved Phase 1 cycle permeability plans (including these works) can be found on our website.

We have identified a number of locations across the borough where new cycle links can be provided in order to deliver high quality sustainable travel options. These have been selected based on engagement with stakeholders, requests from the public, links to key destinations such as schools, high streets, hospitals and essential services, and deliverability.

What's going to change?

The Council will implement a cut through on St Paul's Crescent. Work will start from the 28th September 2020 and will include the following changes:

- The single yellow lines on St Paul's Crescent, where it joins the public space, will be upgraded to double yellow lines and double kerb blips (no waiting or loading at any time)
- The guardrail panels by the traffic signals on Agar Grove will be removed

The changes are illustrated in detail on the plan overleaf.

How can you give your views?

To help deliver our Covid-19 programme as quickly as possible, the Council is using Experimental Traffic Orders (ETOs) which, once made, can be brought into force relatively quickly. We have already consulted with statutory emergency services on these changes, who have raised no objections. On 17th September the Council also advertised the ETO in the local newspapers (The Camden New Journal and London Gazette), as statutorily required.

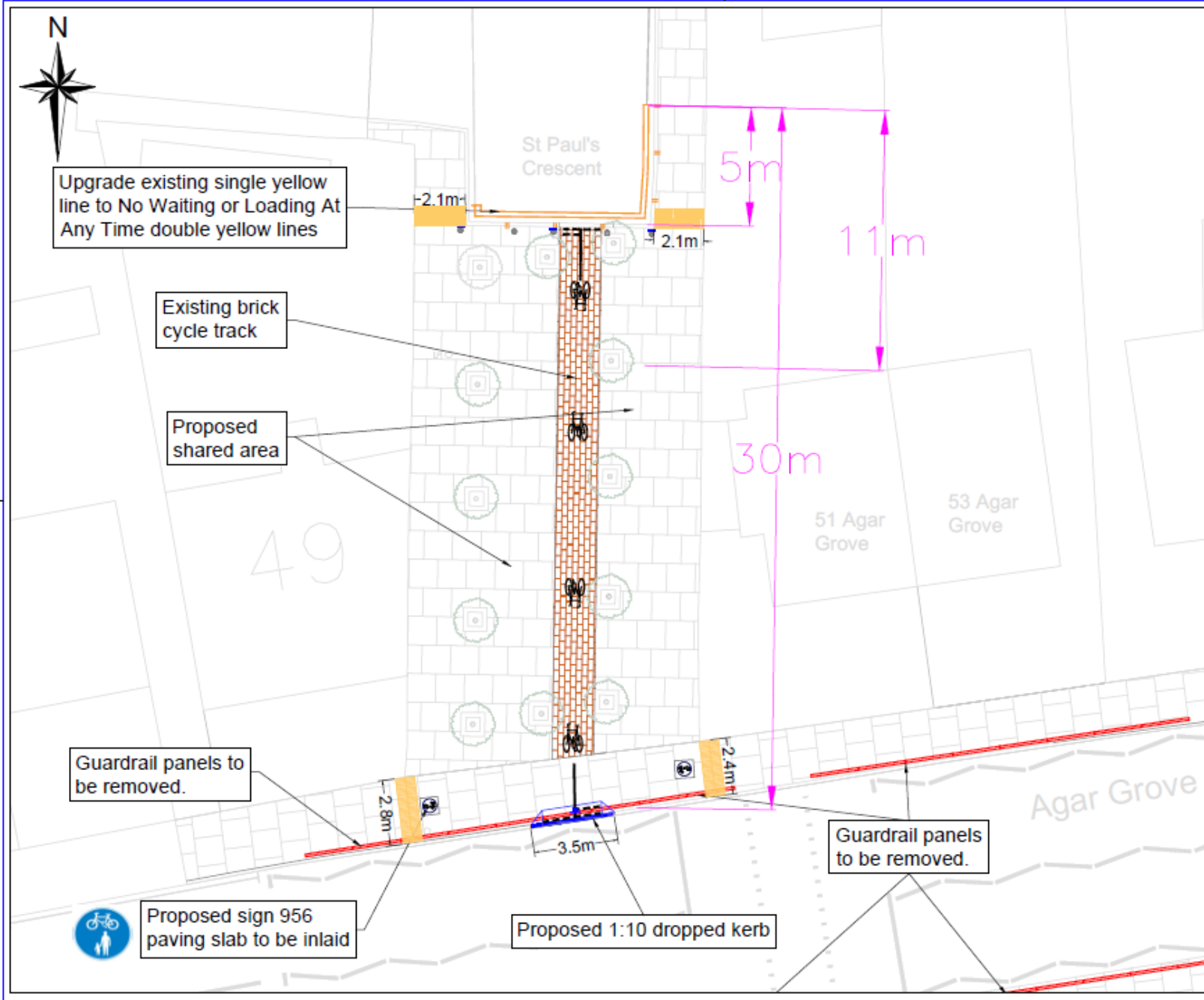
We are now notifying local residents, businesses and stakeholder groups within the local area. The experimental scheme will run for a trial period of up to 18 months and you can provide feedback at any time on the changes we have implemented.

The Council would like to carry out a full public consultation after the experimental scheme has run for 12 months and will take a decision on whether it can do this nearer the time in light of the circumstances then prevailing. This consultation, together with feedback received during the trial period, will then inform the Council's decision as to whether, at the end of the 18-month experiment, the changes should be made permanent. We will be in contact with you again with more details on this closer to the time.

In the meantime, if you have any questions, or wish to provide feedback or comments, please email us on safetravel@Camden.gov.uk.

Yours sincerely,

Camden Safer Travel



KEY

- Existing lamp post
- Existing tree
- Proposed No Loading At Any Time double yellow lines
- Proposed No Waiting At Any Time double yellow lines
- Existing give way lines
- Proposed give way lines
- Proposed cycle symbol lines
- Proposed 'tramline' paving to warn pedestrians walking into a shared area with cyclists
- Proposed dropped kerb
- Proposed cycle sign attached to existing bollard
- Proposed cycle sign attached to new bollard
- Proposed cycle sign attached to new signpost
- Existing cycle track paving
- Existing guardrail to be removed
- 'Except cycles' sub plate to be added to existing 'No through Road' signage.
- 2x at junction of St Paul's Crescent / Cantelows Road.

Camden
 Design Team
 Transport Strategy Service
 London Borough of Camden
 5 Pancras Square
 Tel 020 7974 5551, Fax 020 7974 6952
 0X 2106 Euston, Mircom 020 7974 6866

Project: Cycle Permeability Covid 19 Measures ETO DRAWING

Drawing Title: St Pauls Crescent / Agar Grove Cycle access

Name: NTS	Date: Jul 2020
Drawn By: JA	File Ref:
Checked By:	Clg Name:

Drawing Location: T:\Camden\2020-21-Cycle Permeability\20202118_Design\01_Marking_Design\01_Camden_Design

Drawing Number: St Pauls Crescent TMO Rev: **B**