

Infrastructure and Growth Newsletter

January 2019

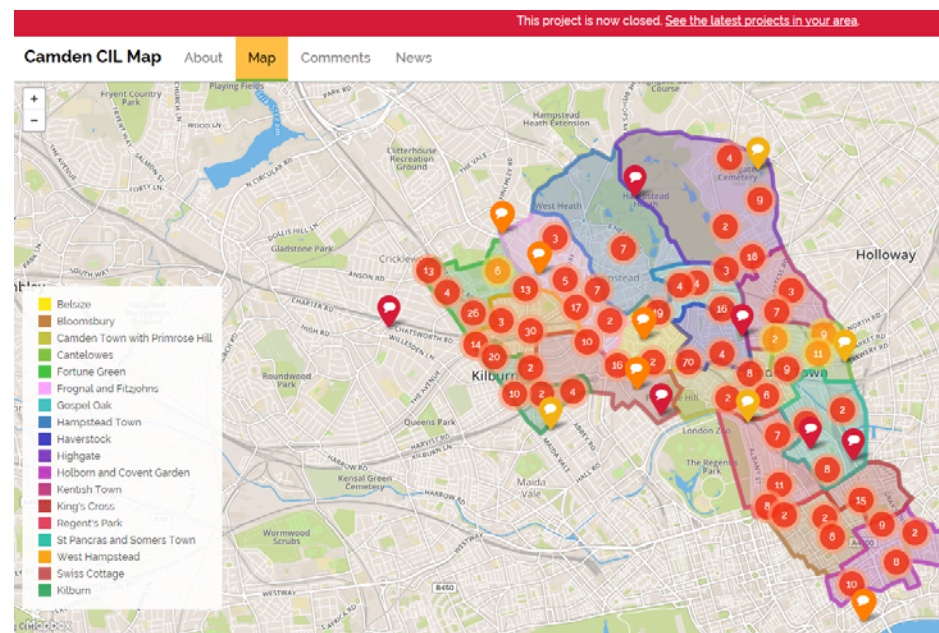
Welcome to the new **Infrastructure and Growth** newsletter, which provides an update on planning obligations (also known as Section 106 agreements) and the Community Infrastructure Levy in Camden. This first edition covers the period from April 2018 and December 2019. It includes updates on:

- Our 'CIL and Section 106 Annual Report' for 2017/18
- A recent consultation on 'local CIL' spending priorities
- Key projects that have been funded using CIL and Section 106 funds
- A CIL and Section 106 financial update.

Consultation on 'local CIL' spending priorities

Around 550 responses were submitted to recent consultation on community priorities for the spending of the local portion of the Camden Community Infrastructure Levy. The consultation was held over October and November 2018 via an online platform called Commonplace. Responses included suggestions made on behalf of 84 community groups and a number of Neighbourhood Forums:

We were delighted with the level of response received, which indicated that - across the borough as a whole - respondents would like to see investment in a wide range of local infrastructure, including community facilities (16% of comment), open/green spaces and nature (14%), transport and streets (12%), community safety (10%) and air quality (9%).



Responses to our local CIL priorities consultation we made via the Commonplace consultation platform

CIL and Section 106 Annual Report published

We have now published our CIL and Section 106 Annual Report for the financial year 2017/18. It sets out progress in the collection and spending of Camden CIL, along with the year's s106 income as well as to planned future expenditure.

The report highlights continued progress in the spending of Section 106 monies on major schemes in the borough as well as preparations for a consultation on 'Local CIL' spending priorities, which is discussed overleaf.

Please use this link to view the report (*link to be inserted*).

Project updates (CIL)

CIL project funding continues, with nearly £500,000 allocated on local projects since April 2018.

LOCAL CIL FUNDS ALLOCATED 1st April to 31st December 2018	
Belsize Community Safety (CCTV)	£92,000
Croftway and Bracknell Way Refurbishment	£45,039
Belsize and Swiss Cottage Air Quality Monitoring	£2,510
Belsize and Swiss Cottage Air Quality Monitoring	£2,510
Under 5s Creative Play and Arts Bedford House	£12,333
Upgrade of Lighting and Air Con Dragon Hall	£14,221
Under 5s Drop In Dragon Hall	£13,230
After School Clubs Dragon Hall	£12,020
Older people's Befriending Service	£16,000
Primrose Hill Community Library	£150,000
Argyle Street Community Centre Feasibility Study (KCBNA)	£2,000
Holy Trinity and St Silas School Playground Refurbishment	£88,701
The Third Age Project Haymarket Refurbishment	£5,918
Investment in Holly Lodge Community Centre	£6,850
Seven Dials Renaissance Study Online 2nd Payment	£4,430
New Diorama Theatre Upgrades	£13,150
Total	£480,911

As an example £88,000 in local CIL funds have been passed to **Holy Trinity and St Silas School** for playground refurbishment to create an area that encourages integration, well-being and educational play.



A map showing the latest information on the agreed projects can be by clicking the following link: [Map of agreed local CIL allocations](#)

Project updates (Section 106)

Centre for Independent Living at Greenwood place opens

The new Centre for Independent Living at the Greenwood Centre has now opened. Following completion at the end of 2018, Learning Difficulties and health support providers have now moved into the centre, which offers a range of support services to support independent living for people with profound and multiple learning disabilities and for people on the autistic spectrum. £2.4m in Section 106 funding from UCLH is being used to help fund the new Centre, which provides day centre facilities as well as rooms for music, IT, art, a training kitchen and flat and meeting rooms.



Works commence on the West End Project

Work has started in earnest on the delivery of Camden's West End Project, will deliver major improvements to the public realm in the borough's West End.



Work is now underway to transform the areas around Tottenham Court Road, Gower Street, Bloomsbury Street, Princes Circus and St Giles. This £35 million scheme is receiving £16m in funding support from Section 106 contributions.

Section 106 funds for health and community projects

Since April we have used Section 106 funds to support a number of health and community-related projects including:

- £55,000 towards the Fulfilling Lives Islington Camden homelessness and health pilot project.
- £23,000 to support the Hive Shed and Social Enterprise
- £26,000 for extra consulting room space at West Hampstead Medical Centre
- £183,000 as part of a wider allocation for the redevelopment of Bedford House community building
- Smaller amounts to support the Hive Shed and Social Enterprise (£23,000) and the Edith Neville Families in focus project (£11,000).

CIL and Section 106 financial updates

For more financial information on CIL and Section 106, including updates on recent financial receipts, please visit our CIL and Section web pages:

- [Planning obligations \(Section 106\)](#)
- [Community Infrastructure Levy](#)

Full information on spending this year will be provided in our next Annual Report, to be produced following the close of the Financial Year.

Next Issue

The next issue of this newsletter will be published following the end of Quarter 4 2018/19 (January - March 2019).

We would welcome your feedback on this newsletter. If you have any comments or queries please email Infrastructure and Growth team at:

- planningobligations@camden.gov.uk (for Section 106 related queries)
- CIL@camden.gov.uk (for community infrastructure levy related queries)