

Improving quality in adult social care

Cynthia Davis



Care Quality Commission

Regulated by



CQC checks the quality of different services including:



NHS

- The NHS & GP's



- Support at home



**Community
Health**

- Community health

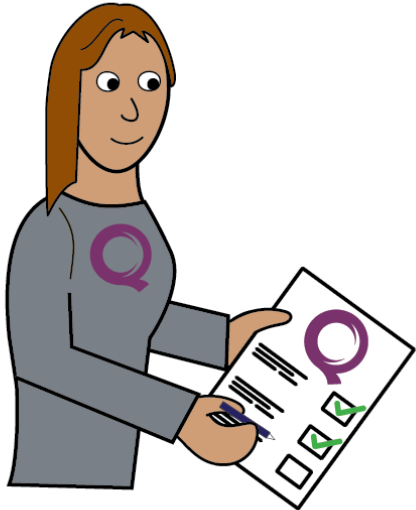
Adult Social Care Quality and Care Quality Commission



The quality of Councils adult social care service will also be checked by the Care quality commissioning

Care Quality Commission

care quality commission



CQC is the independent body which checks for the quality of health and adult social care in England.

They make sure that health and social care services provide people with:

- safe,
- effective,
- compassionate,
- high-quality care and support

They encourage care services to improve & prepare papers on their findings

They make sure they check actions are making improvements

Future talks



✓ Hear about your experiences and views

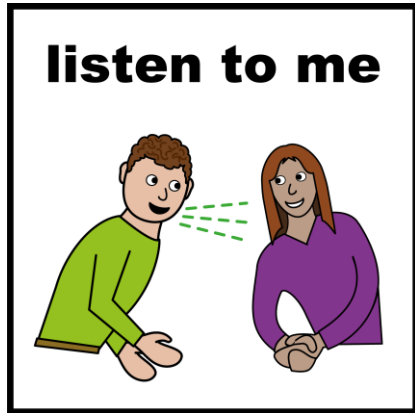
✓ Understand what you think is working well



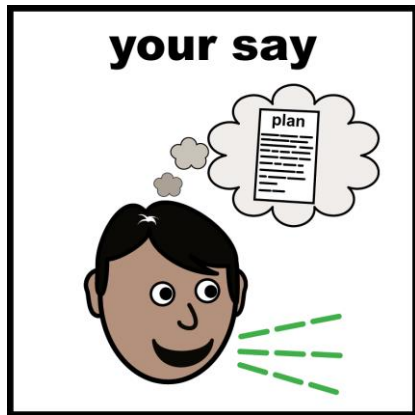
✓ Share ideas on what may not be working well

Why is it important to us that
you are involved?

Why is co-production important?

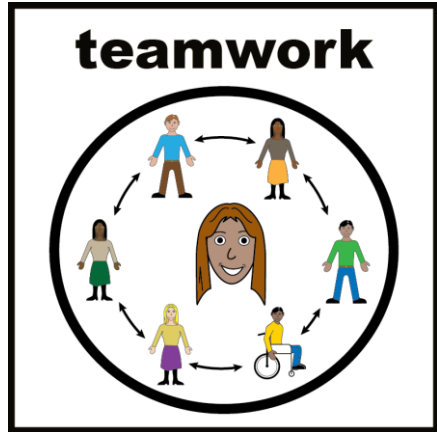


People feel listened to



More satisfaction with services

Why is co-production important?



Builds trust and connections



Helps build confidence and self-esteem



What's the best way to talk more about this with people?