

Greening Phoenix Road

Community Engagement Summary

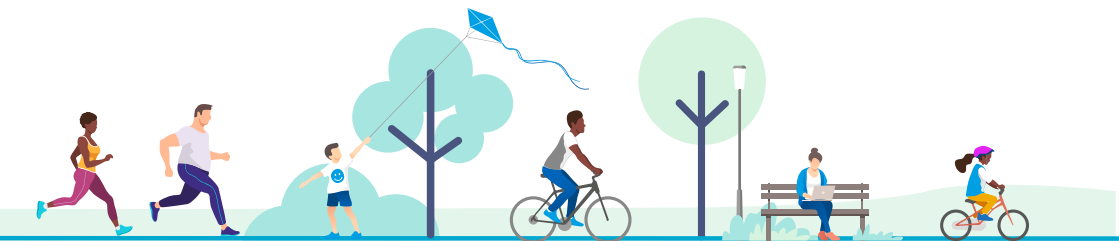
In summer 2019 we worked with Groundwork London to ask about how we could improve Phoenix Road and create new green spaces.

We heard from nearly 700 participants who shared their comments and suggestions.

During 2020 we will be working with urban designers to develop improvements to Phoenix Road to create a shared space that is clean, vibrant and sustainable and that supports a safe, strong and open community.

The engagement findings will inform this design phase. Not only in how the space can be improved, but also in the ways we will work to deliver the changes to Phoenix Road in the next few years, giving everyone a voice and creating a place that works for our community.

Previous studies investigated possible changes to the streets in the area to prioritise safer routes for pedestrians and cyclists, and create space for communities to enjoy, including creating a pleasant walking route between Euston and St Pancras Stations.



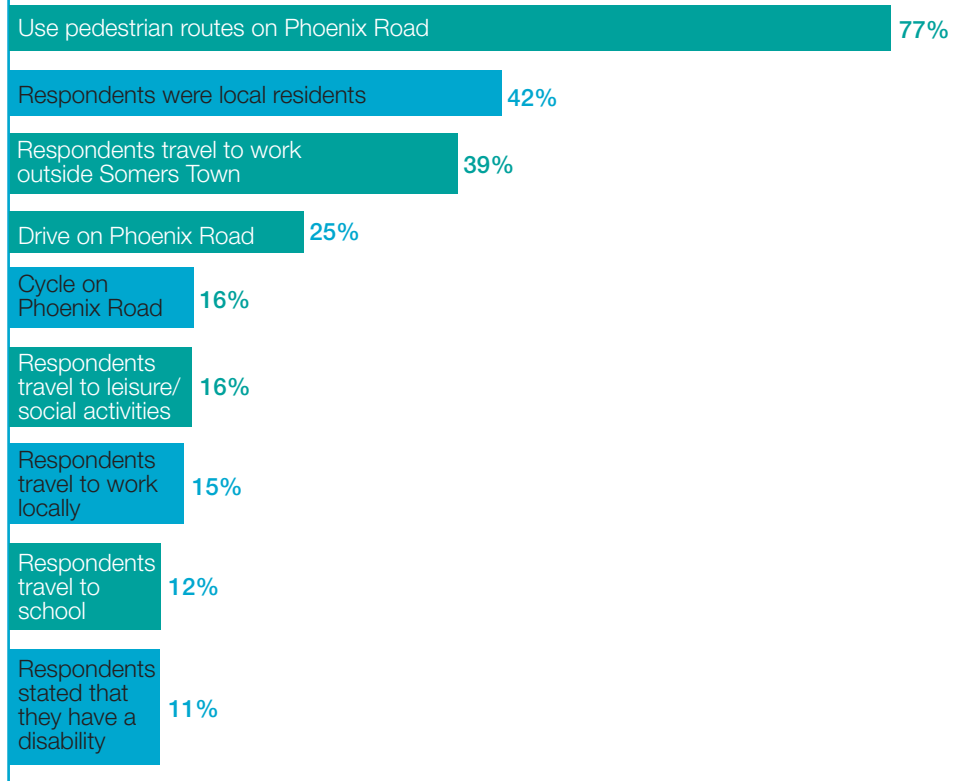
This document summarises the responses to four broad questions. You can access a copy of the **full report here**.

Questionnaire respondents told us ...

Question 1

How does Phoenix Road meet the needs of different people today?

How they use Phoenix Road today ...



This work is an important part of the HS2 Assurance secured by Camden to help mitigate against the construction impacts of HS2.

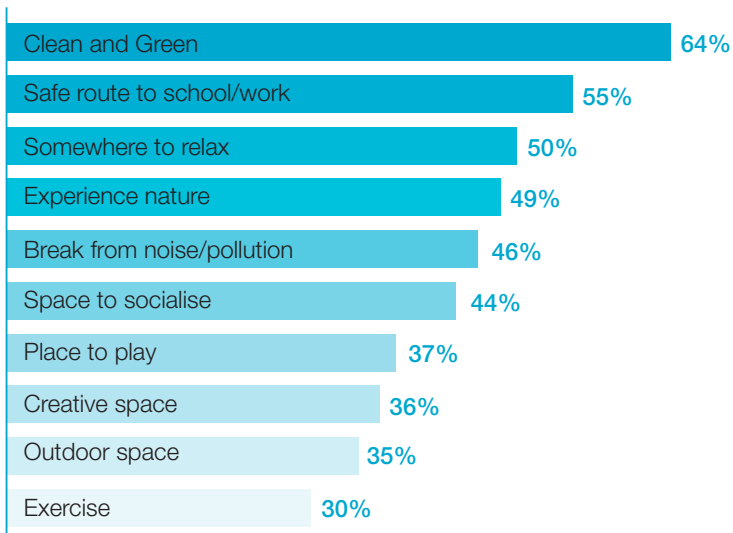
How they feel about Phoenix Road today...

Perceptions about Phoenix Road	Score
There are lots of things to do	4.2
I think there are adequate places to stop and rest	4.6
Air is clean	4.7
Phoenix Road is a space to be proud of	5
The area is attractive for walking	5.1
I am comfortable with the noise levels	5.4
The area is attractive for cycling	5.5
I feel that Phoenix Road and the surrounding streets are welcoming spaces	5.6
I feel safe when I walk/ cycle down Phoenix Road/ Brill Place	5.8
I feel relaxed when I use Phoenix Road and the surrounding streets	5.9
I would take part in community activities on Phoenix Road-Brill Place	6.1
Crossing Phoenix Road is easy	6.2

Question 2

How can Phoenix Road be improved to create inclusive space for all?

Re-imagining Phoenix Road in the future

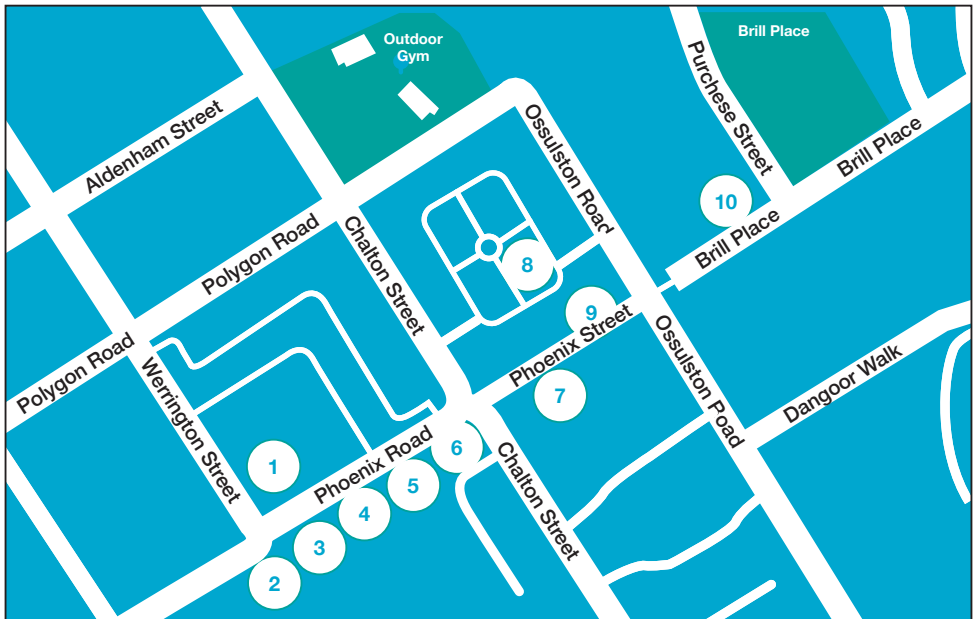


Question 3

What are your ideas for greening improvements and where would these work best?

10 suggestions and locations for greening Phoenix Road and enhancing safety:

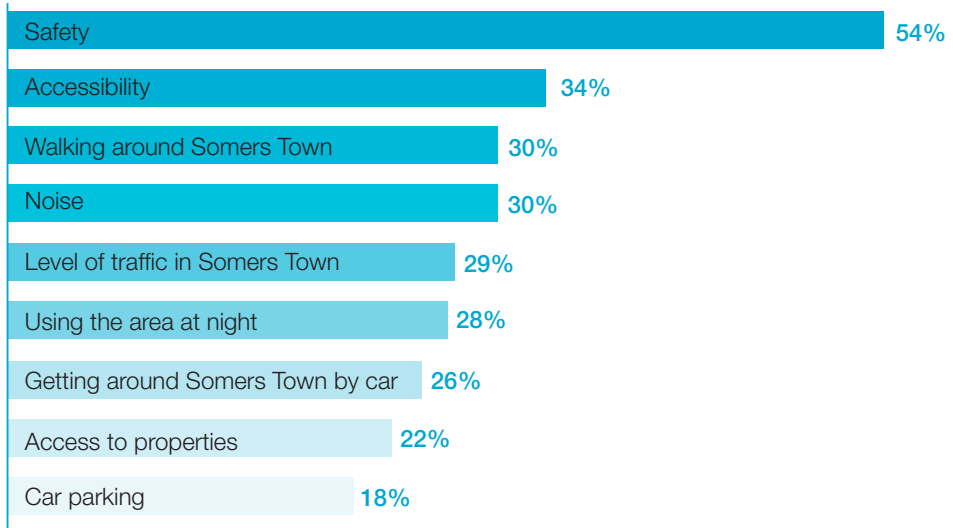
1. Oakshott Green – planting for wildlife
2. Scooter to School trail and seating
3. Safe crossing points
4. Planting of tree bases
5. Climbers and planting to green Maria Fidells wall
6. Traffic calming
7. Public art and creative planters
8. Sensory planting including raised planters in Walker House courtyard
9. Raised planters
10. Hanging baskets at Brill Place



Question 4

What are the potential challenges and how can we overcome them?

The most important issues that need to be considered ...

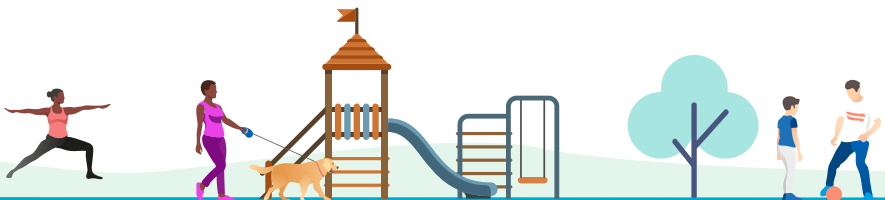


Next steps

The next step is to work with urban designers to develop a concept design for Phoenix Road.





Ensuring the proposed changes reflect the needs and priorities of local communities is key to the success of this project. Many of the issues are complex and we want to work together to tackle the challenges and develop real solutions to ensure Phoenix Road becomes an inclusive and vibrant space at the heart of a safe, strong and open community.

This work is an important part of the HS2 Assurance secured by Camden to help mitigate against the construction impacts of HS2.



Key findings and recommendations

Aspirations for changing Phoenix Road for the better fall into 5 broad themes:

-  **1** From grey to green – a colourful and biodiverse public realm
-  **2** Place specific and unique – reflecting the character of Somers Town
-  **3** Safe and accessible for all
-  **4** Sociable and playful shared spaces
-  **5** Well-connected and integrated.



Please sign up if you would like to help shape the future for Phoenix Road
greeningphoenixroad@camden.gov.uk

