

Euston is changing – Who is doing what?



HS2 Ltd

- Building a new high speed railway station and tracks at Euston on behalf of central Government.
- Creating new and replacement open space, bus, taxi and cycle facilities, as well as improvements to Euston and Euston Square tube stations.
- Responsible for minimising disruption and the impacts of construction.

Network Rail

- Managing the existing Euston station and railway tracks.
- Redeveloping the existing Euston station.
- Preparing the way for HS2 construction.

TfL

- Operating tubes, buses, the Overground and strategic roads. Many of these will be upgraded as a result of the HS2 works.
- Delivering Crossrail 2 which will include a station with entrances at Euston and St Pancras.

Lendlease

- Working on behalf of Network Rail and Department for Transport to look at how railway land could be redeveloped over the next 20 years.
- Will be seeking permission to build homes, shops, open space, offices and community facilities above the station.

Camden Council

• We stand with our residents and have a responsibility to help minimise disruption by ensuring planning, noise and highway regulations are met by all Euston partners.



• We are opening up a community hub in the Euston area where you can raise your concerns.



• We are the Planning Authority, and we have a crucial role in deciding what is built at Euston*. We will consider plans from HS2, Network Rail and Lendlease against our planning policies.

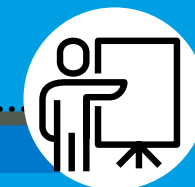
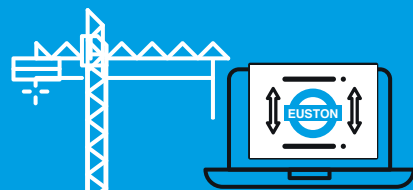


• Taking into account what the community have told us so far, we are writing new planning guidance to set out how homes and buildings should be designed above the station and tracks. We will come back to you later this year to get your views on a draft of this.



*Parliament has granted HS2 permission to build the station and the act limits our usual planning powers for the station.

Euston is changing – What's happening now?



HS2 Ltd

- HS2 have appointed a construction partner and building works have started on the new station.
- Some roads have been closed for construction.
- Thinking about how parts of Euston used for construction will be restored once works are finished.
- HS2 are in discussions with the Council about the design and appearance of the new station.

Network Rail

- Network Rail are writing up options for how the existing station could be redeveloped to work with the new HS2 station and development.

TfL

- Working on proposals for Crossrail 2 which will need to be agreed by Parliament.



Lendlease

- Lendlease are meeting with community groups, businesses, schools, faith groups and others to help develop the Euston station masterplan.
- They will be consulting on these proposals later this year.

General contact information

HS2 Ltd

For queries about railway construction works at Euston contact HS2 on:

HS2 in Camden website:

www.HS2inCamden.co.uk

The HS2 Helpdesk team can be contacted all day, every day of the year on:

Email:

hs2enquiries@hs2.org.uk

Freephone:

08081 434 434

Minicom:

08081 456 472

Network Rail

For queries about the existing station and any Network Rail works contact Network Rail on:

Customer Helpline:

03457 11 41 41
networkrail.co.uk

TfL

For queries about TfL services, contact TfL on:

Customer Helpline:

0343 222 1234
tfl.gov.uk/help-and-contact/

Lendlease

For queries about future development plans contact Lendlease on:

Email: EustonCommunity@lendlease.com

A website will also go live when the masterplan consultation begins

Camden Council

For queries about what the Council's role is and what our planning policies are please visit:

Camden's HS2 webpages:

www.camden.gov.uk/about-hs2

Planning Policy for Euston: Local Plan:

www.camden.gov.uk/local-plan-documents

Euston Area Plan:

www.eustonareaplan.info

Live planning applications:

www.camden.gov.uk/search-for-planning-applications