

# Groundwork London Green Doctors

Camden Energy Café  
10<sup>th</sup> and 24<sup>th</sup> November 2020



# Green Doctor Programme

For 14 years our *Green Doctors* have been helping households in London save money, stay warm and improve energy efficiency at home.

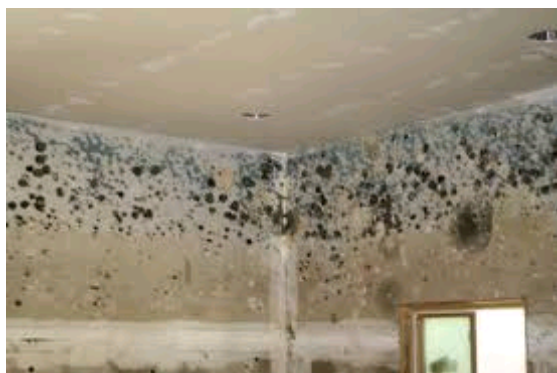
In partnership with London Boroughs and Housing Associations we visit residents' homes to *install free energy-saving measures, give advice on bills and provide referrals to further services to improve health and well-being.*



# Why it is important to live in a warm home & save money on bills?

Keeping your house warm is not just a matter of comfort, it is important for your personal Health (mental and physical) and wellbeing.

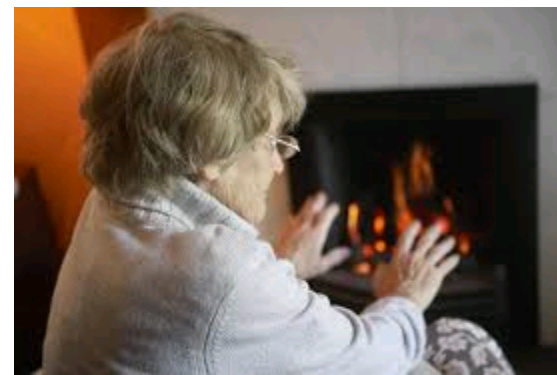
Cold homes can cause other problems like damp & mould



High energy bills and debt cause mental stress and anxiety



Keeping warm is important for your physical & mental health

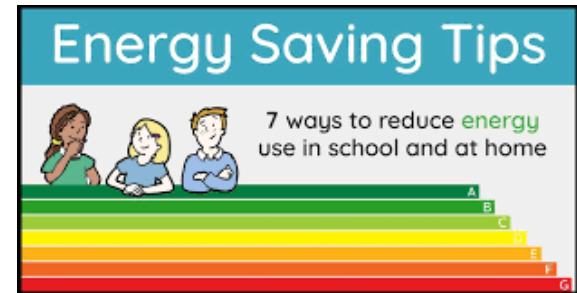


# What can you do to reduce the cost of keeping warm?

Switch your energy provider



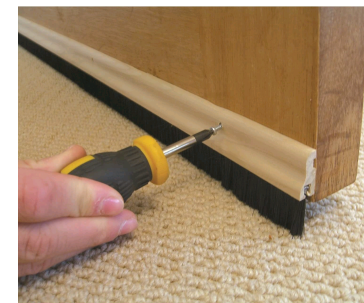
Learn what easy actions can reduce energy use at home



Get a smart meter from your energy provider



Install measures to save energy



# *How many of you have switched energy provider in the last year?*

Switching provider could save you up to £ 290 /year



# Switch energy provider

- » There are now over 60 energy suppliers in the UK
- » 80% of people are still with the 'Big 6' traditional suppliers
- » But over 4.4m switched last year to get a better deal.
- » Lots of websites. [Ofgem accredited sites](#) compare the most companies:

Energyhelpline.com

Moneysupermarket.com



# Why consider Switching?

- Get the best possible deal – why pay more than is necessary?
- Consumers who have never changed payment method or supplier could be paying more than they need to
- Long-term trend is for fuel prices to rise
- Winter is approaching
- Householders need to be able to heat their home for comfort and health



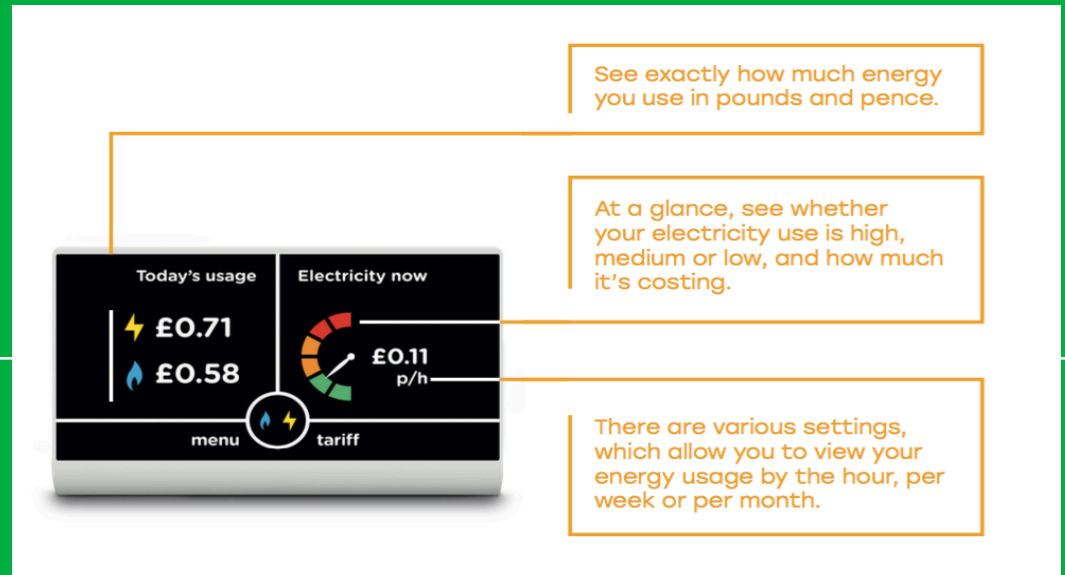
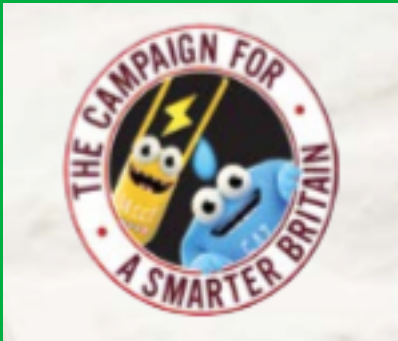
# What type of information can we find on our energy bills?

- Tariff name
- End date of your current tariff
- Your annual consumption
- Do you have exit fee?
- What is a unit rate ?
- What is standing charge ?
- “Could I pay less” section on energy bill



# What is a smart meter?

- Smart meters are a next generation meter for both gas and electricity.
- Can monitor real-time electricity usage
- Sends off direct meter readings
- Can top up online or over the phone (if you have a prepayment meter)
- You can get one for free from your energy supplier
- Can see how much energy you used over the last day/week/month
- Get accurate bills



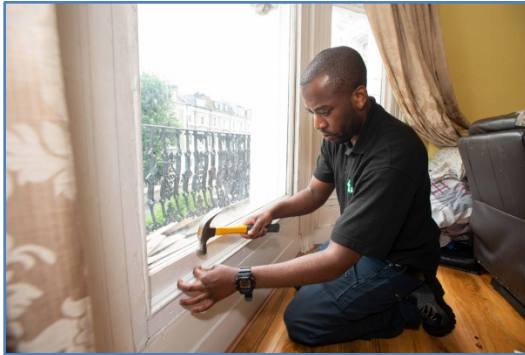
# Energy-efficient measures



- Draught-proof doors and windows
- Fit energy-saving, LED lightbulbs
- Fit reflective radiator panels to prevent heat loss
- Apply water-saving measures

# Measures we could drop off after a telephone consultation

Draught excluder



Save a Flush



Automatic stand by plug



Shower timer



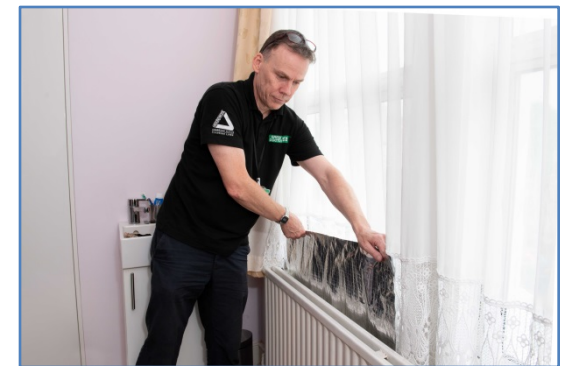
Shower Head



Light bulbs



Radiator Panels



- Turn thermostat down by at least one degree Saves £80 a year
- Use a washing up bowl Saves £25 a year
- Take shorter showers Saves £7 per person each year
- Dry clothes on the line rather than in the tumble dryer Saves £18 a year
- Reducing Dishwasher Cycles per week by 1 Saves £9 a year
- Switch off the lights when leaving the room Saves £15 a year
- Don't overfill the kettle Saves £ 6 a year
- Turn appliances off standby Saves £ 30 a year
- Wash clothes at 30C Saves £52 a year
- Switch to low energy bulbs Saves £78 over life time of the bulb



# Green Doctor service

Provide residents who meet the eligibility criteria with **free phone consultations** on:

- Energy saving advice
- Bill and debt advice (switch tariff or provider)
- Smart Meters information
- Warm Home Discount, Priority Services Register
- Advice and support applying for **grants** and **other local services**
- Saves average of £350 per annum
- Free energy-saving measures (contact free drop offs)

# Eligibility Criteria

- Households on a low income ( below £16,190) or where fuel costs are greater than 10% of their income.

Households may also be eligible if a member of the household falls under one of the following groups:

- Has a disability
- Has a long-term health condition worsened by the cold
- Is an adult over 60
- Is pregnant
- Is a child under 10

# How to book a phone consultation

Go to

<https://www.camden.gov.uk/wish-plus>

or phone

Green Camden Helpline (Camden Council)

0800 801738



# Follow us on social media:



[@GreenDoctorsLdn](https://twitter.com/GreenDoctorsLdn)



[@greendoctorsldn](https://www.facebook.com/greendoctorsldn)

thank you

tusind tak  
謝謝 dakujem vám  
ngiyabonga  
dziękuje  
merci  
baie dankie  
धन्यवाद molte grazie  
gracias  
obrigada  
obrigado  
teşekkür ederim  
شكرا  
tack så mycket  
takk  
dank u  
mahalo  
teşekkür edire