

Lighting System – overview

The system made up of a combination of generic and intelligent lighting units rigged in a way that it be normally suitable for music performances, capable of providing colour washes and open white states with only minimal repositioning and focussing.

There are minimal facilities for theatrical use although a small number of profile spots do exist on the rig. For club use there are 8 Chauvet Rogue R2 LED moving head lanterns capable of being controlled from any DMX control desk or from the existing house control system.

There are a total of eighteen 2KW dimmers available although some of the channels are also used to provide atmospheric house lighting.

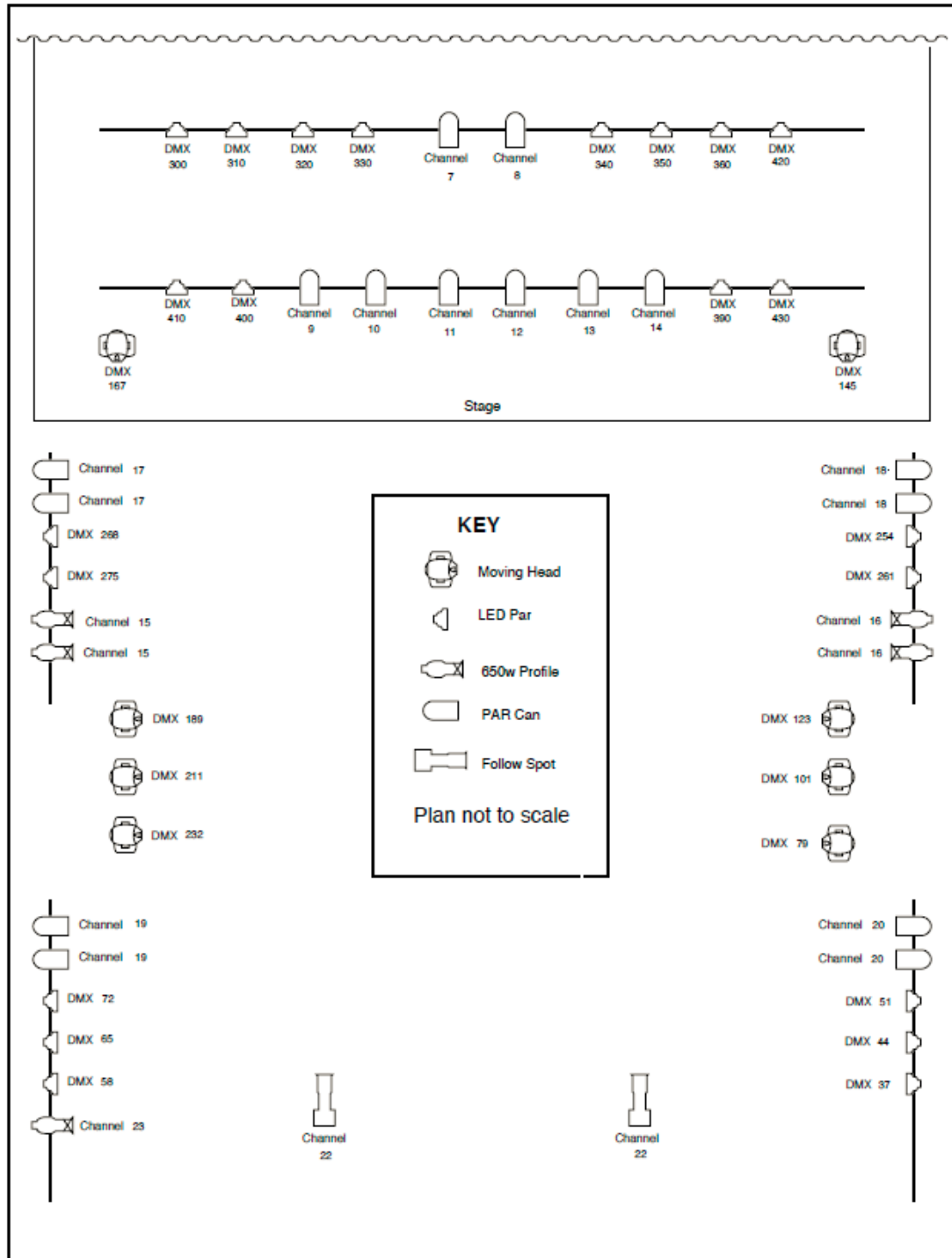
There are facilities to make any house pre wired position into a ‘hot’ supply although a maximum of 8 are available at any one time.

Equipment schedule

8 x	Par64 cans (mostly with CP62 lamps)
8 x	Short nose Par64 cans (house lights – CP95 lamps)
22 x	Chauvet 18 x 3W LED Par cans
4 x	Profile spots (650W)
2 x	1KW follow spots
8 x	Chauvet Rogue R2 moving lights
10 x	Showtec 18x3W LED uplighters
3 x	Lightmaster paradim dimmer racks
1 x	Avolites Pearl 2004 lighting desk
1 x	Jem hazer

Terms and conditions: All hall hire costs are inclusive of VAT all other costs are exclusive of VAT. All fees, charges and conditions are subject to change at the discretion of the management of the Camden Centre and the London Borough of Camden.

Lighting System - plan



Terms and conditions: All hall hire costs are inclusive of VAT all other costs are exclusive of VAT. All fees, charges and conditions are subject to change at the discretion of the management of the Camden Centre and the London Borough of Camden.