

# Levring House

Scheme address: Doughty Mews, WC1N  
Architect: Jamie Fobert Architects  
Quantity surveyor/ contract administrator: Norman Rourke Pryme  
Service engineer: Mendick Waring  
Structural engineer: Eckersley O'Callaghan  
Lighting designer: PJC Light Studio  
Client/owner: Troels Levring and Peter Zenneck  
Completed: June 2014

Scheme description: This contemporary brick house in-fills a vacant corner plot to complete a historic mews in the Bloomsbury Conservation Area. With proposals restricted by right to light conditions, the new house was developed around a reinterpretation of the London light well. The light well descends right down into the basement, where there is a 14m pool lined with marble. A series of volumes step up from the basement to the top of the house, wrapping around the light well and opening the whole house to daylight. The exterior is clad in fine quality brick and lightly-finished bronze.

Panel comments: *"This house first appears as a series of shifting planes of pale brick and bronze that turn the corner of a mews. A discrete front door opens onto a extraordinary sequence of spaces that lead either upwards to a roof terrace facing south across the city skyline, or down to a mossy courtyard and marble clad lap pool."*

*"An infill building which respects both the scale and character of its mews site, but which introduces sculpted massing carried out in thin Danish brick – which we associate with exponents of Danish modernism – to produce finely modulated elevations of exceptional quality. Interiors provide generous spaces unexpected in a site of this size, enhanced by ingenious and practical detailing."*

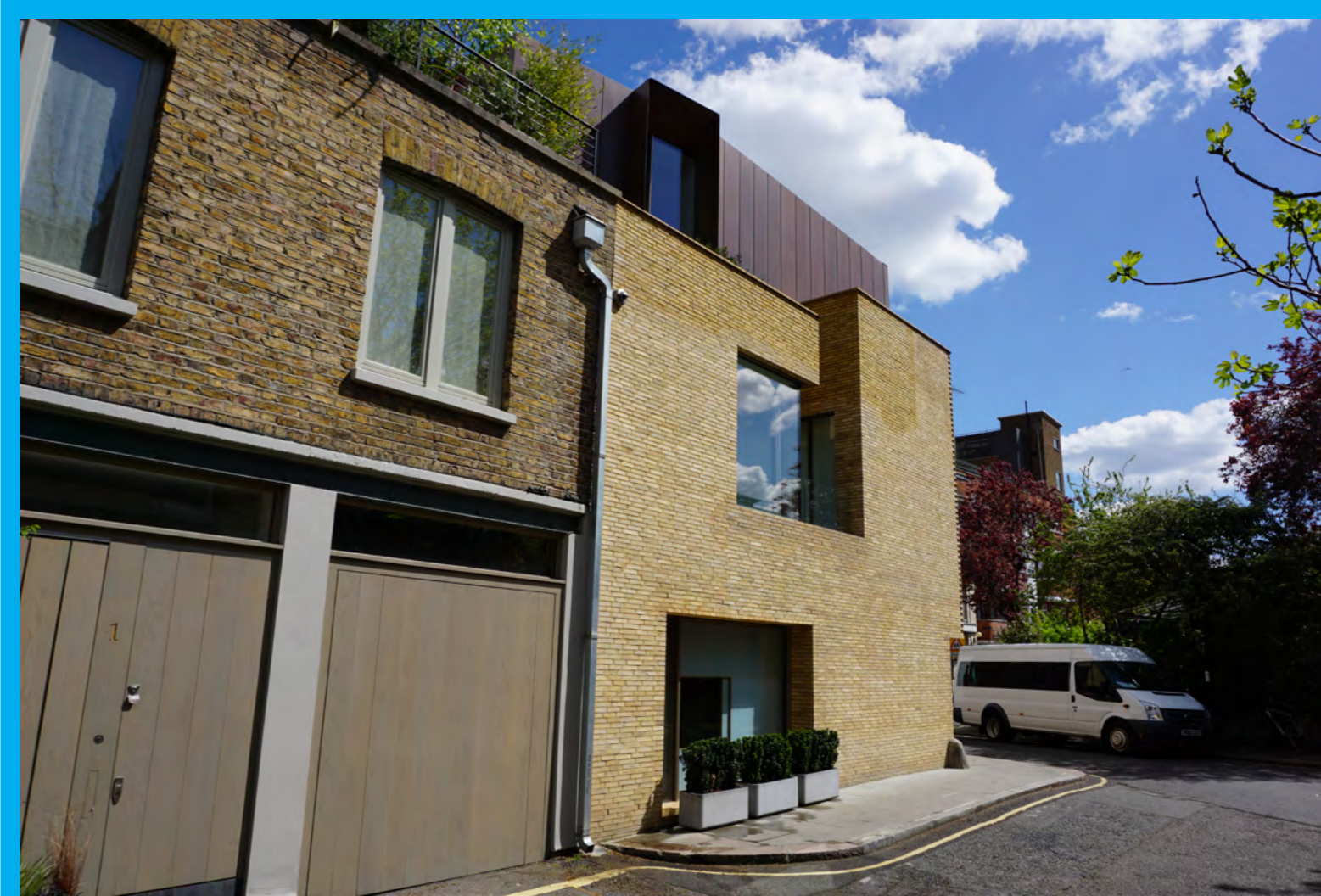


Photo Credit: © Dennis Gilbert